

2013

**LSU**

Rainmakers

Mid-Career Scholar Award  
Science, Technology, Engineering  
or Mathematics

**Michael Malisoff**

Mathematics

Sponsored by



**CAMPUS  
FEDERAL®**

The  
Louisiana State University  
Office of Research &  
Economic Development  
and  
Campus Federal

present the



**MARCH 26, 2014**

## Who are the Rainmakers?

We've borrowed the metaphor from the business vernacular, but its origin is more ancient. In the broadest sense, a Rainmaker is one whose special skills and superlative effort bring prosperity to the tribe.

In the university context, Rainmakers are faculty who are nationally and internationally recognized for innovative research and creative scholarship; who compete for external funding and awards at the highest levels, and who attract and mentor exceptional graduate students.

This year, it is you who bring the most welcome resources and respect to your home departments and to LSU. We salute you!

*A Message from*  
**Vice Chancellor Kalliat T. Valsaraj**

Welcome to the 2013 Rainmakers Awards ceremony and reception. This is a wonderful event which celebrates the essence of the University. It is the sixth in a series sponsored by Campus Federal Credit Union. It clearly acknowledges the importance and impact of faculty research and scholarship to the University, and the communities we serve.

Faculty we honor tonight were nominated by their colleagues and judged by their peers on the LSU Council on Research. They were chosen to receive an Emerging Scholar Award, Mid-Career Scholar Award or a Senior Scholar Award. Separate awards were chosen for Faculty in the Arts, Humanities, Social Science or Behavioral Sciences or areas in Science, Technology, Engineering or Mathematics. Awardees were chosen based on the high quality of their research and creative activities and scholarship as well as significant recognition by institutions external to the University.

Reading the brief biographies of the individual awardees and listening to comments you will hear from their nominators, I think you will agree that the 2013 Rainmakers are a truly outstanding group. They bring a special individual and collective honor to LSU.

On behalf of the University and Campus Federal, I want to thank you all for your participation in this ceremony.

**Rainmakers Celebration**

7:00 pm - 9:30 pm - March 26, 2014

**Reception**

Entertainment by the John Bishop Trio

**Welcome and Opening Remarks**

Kalliat T. Valsaraj, Vice Chancellor

Stuart R. Bell, Executive Vice  
Chancellor & Provost

Dawn Harris, Campus Federal  
Chief Operating Officer

**Presentation of Awards**

**Emerging Scholar**

Hongchao Zhang, Mathematics  
Remarks by William Adkins

Michael Pasquier, Philosophy & Religious Studies  
Remarks by Delbert Burkett

Brian Shaw, Music  
Remarks by Kristin Sosnowsky

**Mid Career Scholar**

Troy Blanchard, Sociology  
Remarks by Ed Shihadeh

Michael Malisoff, Mathematics,  
Remarks by William Adkins

**Senior Scholar**

Sharon Weltman, English  
Remarks by Elsie Michie

the 2013  
*Rainmakers*



**Emerging Scholar Award**  
Arts, Humanities, Social or Behavioral Sciences

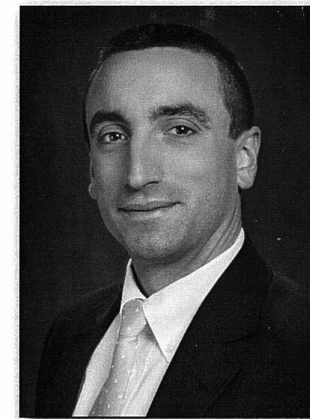
Michael Pasquier

Michael Pasquier, Associate Professor of Religious Studies and History, is a native of Rayne, Louisiana, and a 2002 graduate of LSU. Before returning to LSU in 2008, Dr. Pasquier received his Ph.D. in American Religious History from Florida State University in 2007 and served as a Visiting Scholar at the American Academy of Arts and Sciences in 2008-2009. He specializes in the history of religion, culture, and the environment in the United States. His first book, *Fathers on the Frontier: French Missionaries and the Roman Catholic Priesthood in the United States, 1789-1870* (Oxford University Press 2010), profiles the lives of French missionary priests in the early American republic.

He is the editor of the book *Gods of the Mississippi* (Indiana University Press 2013), which explores the history of religion in the Mississippi River Valley from the colonial period to the present. He also teamed-up with Zack Godshall, Assistant Professor of Screenwriting at LSU, to produce the documentary *Water Like Stone* (2013), which is a film about the people who live in Louisiana's vanishing wetlands. With support from the National Endowment for the Humanities, Dr. Pasquier is currently working on a book about the cultural impact of

engineering the Mississippi River in the twentieth and twenty-first centuries. With support from the National Endowment for the Arts and the LSU Coastal Sustainability Studio, Dr. Pasquier is in the final stages of developing an exhibit entitled "On Land / With Water: Tracking Change in a Coastal Community," which showcases the past, present, and future of life along Bayou Lafourche in ways that provide audiences with a deeper understanding of the social and environmental forces at play in Louisiana's ever-changing landscape.

And most recently, Dr. Pasquier has been asked by Routledge to write a textbook on the history of religion in the United States.



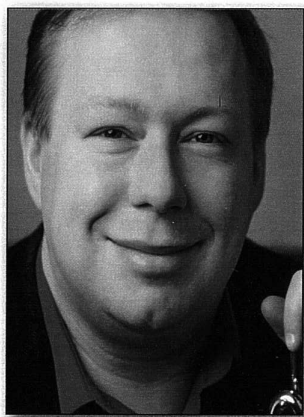
## Emerging Scholar Award Arts, Humanities, Social or Behavioral Sciences

Brian Shaw

Brian Shaw is Associate Professor of Trumpet and Jazz Studies at Louisiana State University in Baton Rouge, and Co-Principal Trumpet of the Dallas Wind Symphony. In addition to his work at LSU, he is active as an international performing and recording musician on modern and valveless trumpets. His diverse research interests include 18th century German and Austrian trumpet repertoire, modern trumpet pedagogy, and the music of jazz trumpeter and composer Kenny Wheeler (b. 1930).

Shaw has been a prizewinner in several international competitions and is the dedicatee of numerous new compositions. His upcoming CD recording, *redshift*, accompanied by the Dallas Wind Symphony, was made possible by an ATLAS grant from the Louisiana Board of Regents, and will be released in the Fall of 2014 on Klavier records. His 2008 debut album, titled *Virtuoso Concertos for Clarino*, includes some of the most difficult pieces ever written for the Baroque trumpet, and is accompanied by an orchestra comprised of New York's finest period musicians.

As a jazz musician and scholar, Shaw directs the LSU Jazz Ensemble, which has hosted such luminaries as Wayne Bergeron, Wycliffe Gordon, and Rufus Reid during his leadership. His jazz books and transcriptions are published by Advance Music, Presser, Schott, and Universal Edition. Over the past two years, Shaw has served as a consultant to the newly established Kenny Wheeler Archive and Exhibition at the Royal Academy of Music in London. Shaw also performs regularly on the popular LSU concert series "Hot Summer Nights and Cool Jazz" alongside pianist Willis Delony and bassist Bill Grimes.



## Emerging Scholar Award Science, Technology, Engineering or Mathematics

Hongchao Zhang

Hongchao Zhang is an assistant professor in the Department of Mathematics and the Center for Computation and Technology (CCT). Dr. Zhang earned his B.S. degree in computational mathematics from Shandong University, China in 1998, his M.S. degree in applied mathematics from the Chinese Academy of Sciences in 2001, and his Ph.D. in applied mathematics from the University of Florida in 2006. From September 2006 to July 2008, he was an Industrial Postdoctoral Fellow at the Institute for Mathematics and Its Applications (IMA) associated with the IBM TJ Watson Research Center. Since August 2008, Zhang has been an assistant professor in the Department of Mathematics and the Center for Computation and Technology (CCT) at LSU. Zhang's research mainly focuses on nonlinear optimi-

zation theory, algorithms and their applications to sparse matrix computing, graph partitioning, inverse problems in medical imaging and petrophysics and derivative free optimization.



## Mid-Career Scholar Award Arts, Humanities, Social or Behavioral Sciences

Troy Blanchard

Dr. Blanchard is Professor of Sociology at Louisiana State University. He joined the department as an Associate Professor in 2007 after serving on the faculty at Mississippi State University from 2001-2007. His primary research interests include demography, health, socioeconomic inequality, and social impact assessment. His research agenda focuses on the interconnections between community organizations (such as local businesses, voluntary associations, and churches), social inequality, and demographic outcomes within U.S. communities.

His research projects are designed to speak to both academic and policy related audiences and address key social problems facing communities. He has received competitive grants from a variety of federal agencies including the National Science Foundation, U.S. Department of Agriculture, and the Bureau of Ocean

Energy Management. Dr. Blanchard also directs the Louisiana Population Estimates Program that is tasked with developing parish and municipal population estimates. His research has been featured in national, statewide, and local media outlets (such as Time Magazine, USA Today, and The Advocate) and he is a regular contributor to media coverage of social policy issues related to demography and social inequality.



## Mid-Career Scholar Award Science, Technology, Engineering or Mathematics

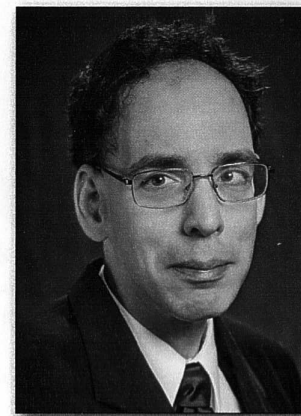
Michael Malisoff

Michael Malisoff received his PhD in 2000 from the Department of Mathematics at Rutgers University in New Brunswick, NJ. His doctoral research was in optimal control and Hamilton-Jacobi theory. He was a DARPA Research Associate in the Department of Systems Science and Mathematics at Washington University in Saint Louis as part of the Joint Force Air Component Commander Project.

In 2001, he joined the faculty of the Department of Mathematics at Louisiana State University in Baton Rouge, where he is now the Roy Paul Daniels Professor #3 in the College of Science. His main research has been on controller design and analysis for nonlinear control systems with time delays and uncertainty and their applications in engineering.

One of his projects is joint with the Georgia Tech Savannah Robotics team, and is developing marine robotic methods to help understand the environmental impacts of hazards such as oil spills. His more than 80 publications include a monograph on constructive Lyapunov methods in the Springer Communica-

tions and Control Engineering Series. His other awards include the First Place Student Best Paper Award at the 1999 IEEE Conference on Decision and Control, two three-year National Science Foundation Mathematical Sciences Priority Area grants, and six Best Presentation awards in American Control Conference sessions. He is an associate editor for SIAM Journal on Control and Optimization and for IEEE Transactions on Automatic Control.



**Senior Scholar Award**  
Arts, Humanities, Social or Behavioral Sciences

Sharon Weltman

Sharon Aronofsky Weltman (Professor of English at LSU) is the author of two books, *Performing the Victorian: John Ruskin and Identity in Theater, Science, and Education* (2007) and *Ruskin's Mythic Queen: Gender Subversion in Victorian Culture* (1999), named Outstanding Academic Book by Choice magazine. She also put together a scholarly edition of the original Sweeney Todd melodrama published in 2012 as a special issue of *Nineteenth-Century Theatre and Film*. She has in addition approximately 50 essays and reviews on Charles Dickens, Christina Rossetti, Charlotte Brontë, and others topics either in print or under contract. This July, she will direct a National Endowment for Humanities Summer Seminar for College and University Teachers called "Performing Dickens: Oliver Twist and Great Expectations on Page, Stage, and Screen" at University of California - Santa Cruz. Professor Weltman serves on many international boards and committees, including the Modern Languages Asso-



ciation Program Committee. She has presented over 40 conference papers, including multiple keynotes. Universities regularly bring her in to speak, including (in the UK) Oxford, Lancaster, and Birmingham, and (in the US) Berkeley, Notre Dame, and the University of Tennessee-Knoxville. Her current book project is "Victorians on Broadway: The Afterlife of Nineteenth-Century British Literature on the American Musical Stage."

**Rainmaker Award Recipients 2012**

**Emerging Scholar**

Julia Buckner, Psychology  
Prosanta Chakrabarty, Biological Sciences

**Mid Career Scholar**

Ashok Mishra, Agricultural Economics & Agribusiness  
Rongying Jin, Physics and Astronomy

**Senior Scholar**

Rudolf Hirschheim, Information Systems & Decision Sciences  
Kam-biu Liu Oceanography & Coastal Sciences



**2012 Rainmaker Recipients**

(1st row l-r) Interim Vice Chancellor Thomas R. Klei, Prosanta Chakrabarty, Kam-biu Liu, Rongying Jin, Campus Federal President & Chief Executive Officer Dawn Harris,

(2nd row l-r) Campus Federal Board Member Ken Paxton, Rudy Hirschheim, Ashok Mishra, Julia Buckner



## The Council on Research

Kalliat T. Valsaraj  
*Vice Chancellor  
Office of Research & Economic  
Development*

Evelyn Orman, Chair  
*School of Music*

Mark C. Benfield  
*Department of Oceanography &  
Coastal Sciences*

Jeffrey A. Carney  
*School of Architecture*

Q. Jim Chen  
*Department of Civil &  
Environmental Engineering*

John DiTusa  
*Department of Physics &  
Astronomy*

Anne Grove  
*Department of Biological  
Sciences*

Petra Munro Hendry  
*School of Education*

Rudy Hirschheim  
*Department of Information  
Systems & Decision Sciences*

Mark Jarrell  
*Department of Physics &  
Astronomy*

Sarah Liggett  
*Department of English*

Mandi Lopez  
*Department of Veterinary  
Clinical Sciences*

Wen Jin Meng  
*Department of Mechanical  
Engineering*

Ashok Mishra  
*Department of Agricultural  
Economics & Agribusiness*

Krishnaswamy Nandakumar  
*Department of Chemical  
Engineering*

Margaret A. Reams  
*Department of Environmental  
Sciences*

Matthew R. Lee, Ex-Officio  
*Senior Associate Vice Chancellor  
Office of Research & Economic  
Development*

Gus Kousoulas, Ex-Officio  
*Associate Vice Chancellor  
Office of Research & Economic  
Development*

# LSU

LOUISIANA STATE UNIVERSITY  
Office of Research & Economic Development  
134 David Boyd Hall  
Baton Rouge, LA 70803 • 225-578-5833  
[www.research.lsu.edu](http://www.research.lsu.edu)

The Constant Pursuit of Discovery

## LSU Names Rainmakers

---

APRIL 9, 2014 BY [DEPT. RESEARCH COMM. DIR.](#) [LEAVE A COMMENT](#)

LSU's status as a top-tier research institution means that our faculty are leaders in their field, performing at truly outstanding levels every day. Once a year, LSU's Office of Research & Economic Development, with the support of Campus Federal Credit Union, take the opportunity to acknowledge some of our many outstanding faculty with the Rainmaker Awards for Research and Creative Activity.

Rainmakers are those faculty members who balance their extensive responsibilities, which extend far beyond the classroom, with external expectations such as securing funding for their research and establishing the impact of their findings to the scholarly community and society as a whole. These exemplary representatives of LSU garner national and international recognition for innovative research and creative scholarship, compete for external funding at the highest levels and attract and mentor exceptional graduate students.

"We are excited to acknowledge the incredible and impressive achievements of the 2013 Rainmakers," said LSU Vice Chancellor of Research & Economic Development Kalliat T. Valsaraj, who presented the awards in a ceremony held at the Club in Union Square. "These researchers and creative scholars represent our university's excellence and are standard-bearers within their own respective fields. We couldn't do this without the support of Campus Federal Credit Union, and we thank them for their support of our commitment to academic and research excellence."

Ron Moreau, chief development officer at Campus Federal, was also on hand to congratulate the recipients.

"We [Campus Federal] understand the important role research plays not only in LSU's long-term success, but also in the economic and social stability of Louisiana," said Moreau. "We appreciate the opportunity to support these innovative faculty members who represent not only academic accomplishments but also support and mentorship for LSU students. Campus Federal was founded by seven distinguished LSU faculty members in 1934, so it is a fitting legacy for us to continue supporting distinguished faculty for their accomplishments in research today."

Each of the following award-winning faculty members has met one or more of the criteria for high-quality research or creative activities and scholarship, which include, but are not limited to publication in a high-impact journal(s); a highly cited work; external awards; invited presentations at national and international meetings; high journal publication productivity; critically acclaimed book publication(s), performance(s), exhibit(s) or theatrical production(s); high grant productivity; and, for more senior candidates, outstanding citation records and high-impact invited presentations at national and international meetings.

### Emerging Scholar Award

#### Arts, Humanities, Social or Behavioral Sciences

##### Michael Pasquier

Michael Pasquier, associate professor of religious studies and history, is a native of Rayne, La., and a 2002 graduate of LSU. Before returning to LSU in 2008, Pasquier received his Ph.D. in American Religious History from Florida State University in 2007 and served as a Visiting Scholar at the American Academy of Arts and Sciences in 2008-2009. He specializes in the history of religion, culture and the environment in the United States. His first book, "Fathers on the Frontier: French Missionaries and the Roman Catholic Priesthood in the United States, 1789-1870" (Oxford University Press 2010), profiles the lives of French missionary priests in the early American republic.

He is the editor of the book "Gods of the Mississippi" (Indiana University Press 2013), which explores the history of religion in the Mississippi River Valley from the colonial period to the present. He also partnered with Zack Godshall, assistant professor of screenwriting at LSU, to produce the documentary "Water Like Stone" (2013), which is a film about the people who live in Louisiana's vanishing wetlands.

With support from the National Endowment for the Humanities, Pasquier is currently working on a book about the cultural impact of engineering the Mississippi River in the 20th and 21st centuries. With support from the National Endowment for the Arts and the LSU Coastal Sustainability Studio, Dr. Pasquier is in the final stages of developing an exhibit entitled "On Land / With Water: Tracking Change in a Coastal Community," which showcases the past, present, and future of life along Bayou Lafourche in ways that provide audiences with a deeper understanding of the social and environmental forces at play in Louisiana's ever-changing landscape.

Most recently, Pasquier has been asked by Routledge to write a textbook on the history of religion in the United States.

### Emerging Scholar Award

#### Arts, Humanities, Social or Behavioral Sciences

##### Brian Shaw

Brian Shaw is an LSU associate professor of trumpet and jazz studies and co-principal trumpet of the Dallas Wind Symphony. In addition to his work at LSU, he is active as an international performing and recording musician on modern and valveless trumpets. His diverse research interests include 18th century German and Austrian trumpet repertoire, modern trumpet pedagogy, and the music of jazz trumpeter and composer Kenny Wheeler.

Shaw has been a prizewinner in several international competitions and is the dedicatee of numerous new compositions. His upcoming CD recording, *redshift*, accompanied by the Dallas Wind Symphony, was made possible by an ATLAS grant from the Louisiana Board of Regents, and will be released in the fall of 2014 on Klavier records. His 2008 debut album, titled "Virtuoso Concertos for Clarino," includes some of the most difficult pieces ever written for the Baroque trumpet, and is accompanied by an orchestra comprised of New York's finest period musicians.

As a jazz musician and scholar, Shaw directs the LSU Jazz Ensemble, which has hosted such luminaries as Wayne Bergeron, Wycliffe Gordon, and Rufus Reid during his leadership. His jazz books and transcriptions are published by Advance Music, Presser, Schott, and Universal Edition. Over the past two years, Shaw has served as a consultant to the newly established Kenny Wheeler Archive and Exhibition at the Royal Academy of Music in London. Shaw also performs regularly on the popular LSU concert series "Hot Summer Nights and Cool Jazz" alongside pianist Willis Delony and bassist Bill Grimes.

#### **Emerging Scholar Award**

**Science, Technology, Engineering or Mathematics**

#### **Hongchao Zhang**

Hongchao Zhang is an assistant professor in the Department of Mathematics and the Center for Computation and Technology, or CCT. Zhang earned his B.S. degree in computational mathematics from Shandong University, China, in 1998; his M.S. degree in applied mathematics from the Chinese Academy of Sciences in 2001; and his Ph.D. in applied mathematics from the University of Florida in 2006. From September 2006 to July 2008, he was an industrial postdoctoral fellow at the Institute for Mathematics and Its Applications associated with the IBM TJ Watson Research Center. Since August 2008, Zhang has been an assistant professor in LSU's Department of Mathematics and CCT. His research mainly focuses on nonlinear optimization theory, algorithms and their applications to sparse matrix computing, graph partitioning, inverse problems in medical imaging and petrophysics and derivative free optimization.

#### **Mid-Career Scholar Award**

**Arts, Humanities, Social or Behavioral Sciences**

#### **Troy Blanchard**

Blanchard is an LSU professor of sociology at LSU. He joined the department as an associate professor in 2007 after serving on the faculty at Mississippi State University from 2001-2007. His primary research interests include demography, health, socioeconomic inequality, and social impact assessment. His research agenda focuses on the interconnections between community organizations (such as local businesses, voluntary associations, and churches), social inequality and demographic outcomes within U.S. communities.

His research projects are designed to speak to both academic and policy related audiences and address key social problems facing communities. He has received competitive grants from a variety of federal agencies including the National Science Foundation, U.S. Department of Agriculture, and the Bureau of Ocean Energy Management. Blanchard also directs the Louisiana Population Estimates Program that is tasked with developing parish and municipal population estimates. His research has been featured in national, statewide, and local media outlets (such as Time Magazine, USA Today and The Advocate) and he is a regular contributor to media coverage of social policy issues related to demography and social inequality.

#### **Mid-Career Scholar Award**

**Science, Technology, Engineering or Mathematics**

#### **Michael Malisoff**

Michael Malisoff received his Ph.D in 2000 from the Department of Mathematics at Rutgers University in New Brunswick, N.J. His doctoral research was in optimal control and Hamilton-Jacobi theory. He was a DARPA Research Associate in the Department of Systems Science and Mathematics at Washington University in Saint Louis as part of the Joint Force Air Component Commander Project.

In 2001, he joined the LSU Department of Mathematics, where he is now the Roy Paul Daniels Professor #3 in the College of Science. His main research has been on controller design and analysis for nonlinear control systems with time delays and uncertainty and their applications in engineering.

One of his projects is joint with the Georgia Tech Savannah Robotics team and is developing marine robotic methods to help understand the environmental impacts of hazards such as oil spills. His more than 80 publications include a monograph on constructive Lyapunov methods in the Springer Communications and Control Engineering Series. His other awards include the First Place Student Best Paper Award at the 1999 IEEE Conference on Decision and Control, two three-year National Science Foundation Mathematical Sciences Priority Area grants, and six Best Presentation awards in American Control Conference sessions. He is an associate editor for SIAM Journal on Control and Optimization and for IEEE Transactions on Automatic Control.

#### **Senior Scholar Award**

**Arts, Humanities, Social or Behavioral Sciences**

#### **Sharon Weltman**

Sharon Aronofsky Weltman is an LSU professor of English. She is the author of two books, "Performing the Victorian: John Ruskin and Identity in Theater, Science and Education"

(2007) and "Ruskin's Mythic Queen: Gender Subversion in Victorian Culture" (1999), named Outstanding Academic Book by Choice magazine. She also put together a scholarly edition of the original Sweeney Todd melodrama published in 2012 as a special issue of Nineteenth-Century Theatre and Film. She has in addition approximately 50 essays and reviews on Charles Dickens, Christina Rossetti, Charlotte Brontë and others topics either in print or under contract. This July, she will direct a National Endowment for Humanities Summer Seminar for College and University Teachers called "Performing Dickens: Oliver Twist and Great Expectations on Page, Stage, and Screen" at University of California – Santa Cruz. Weltman serves on many international boards and committees, including the Modern Languages Association Program Committee. She has presented more than 40 conference papers, including multiple keynotes. Universities regularly bring her in to speak, including (in the U.K.) Oxford, Lancaster, and Birmingham, and (in the U.S.) Berkeley, Notre Dame, and the University of Tennessee-Knoxville. Her current book project is "Victorians on Broadway: The Afterlife of Nineteenth-Century British Literature on the American Musical Stage."

All Rainmaker recipients receive a one-time stipend of \$1,000 and a plaque in recognition of their achievements.

For more information about the Rainmakers Awards, visit [www.lsu.edu/research](http://www.lsu.edu/research).

For more information about Campus Federal, visit [www.campusfederal.org](http://www.campusfederal.org).

---

FILED UNDER: [STORIES](#), [UNCATEGORIZED](#) TAGGED WITH: [AWARDS](#), [ORED](#)

### Speak Your Mind

<input type="text"/>	Name *
<input type="text"/>	Email *
<input type="text"/>	Website
<input type="text"/>	

POST COMMENT

Protected by [Invisible Defender](#). Showed 403 to 2,492 bad guys.